

Brief Introduction

WPC Flooring—Your first choice!

WPC Flooring represents the newest generation of high-quality resilient wood and tile looking flooring. It has a unique rigid composite core with interlocking-UniFIT design for simple installation.

Simply follow the steps in the following section and you will see how easy it is to lock the flooring together. The wear layer has additives embedded within the finish that makes this floor more durable and resistant to wear or scratches. It can be used in any area of the home and it carries a lifetime residential warranty and a product-specific commercial warranty against wear damage, indentions, moisture, stains, light scuffs and manufacturing defects.

Installation Instructions:

Interlocking System Video demonstration:

<https://www.youtube.com/watch?v=oLSpo7hM57M>

INSTALLATION TOOLS

For all installation methods:

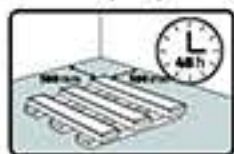
- Tape measure
- Pencil
- Chalk line
- Crosscut power saw
- 3M Scotch-Blue™ 2080 Tape
- Rubber mallet
- ¼" spacers

Acceptable subfloor types:

- CDX Underlayment Grade Plywood (at least ½" thick)
- Underlayment grade particleboard
- OSB (at least ¾" thick)
- Concrete slab
- Existing wood or laminate floor
- Ceramic tile
- Resilient tile & sheet vinyl

Planks needed to complete your project. Measure the length & width of your room. If the room has alcoves or offsets, measure these separately. This will give you the square footage of the room. Purchase a minimum of 10% extra to cover mistakes, trimming and for future needs and or replacement. Most installations require about 10% overage. However this can vary depending upon the room size and layout.

Helpful Notice 1: Acclimate the flooring and the rooms to be installed at a constant temperature between 65°F and 85°F for 48 hours before, during, and maintained after installation.



Helpful Notice 2: For best results it is important mix and install planks from several different cartons during installation to ensure a random appearance.

CHECK THE PLANKS BEFORE INSTALLING THEM TO BE SURE OF APPEARANCE.

We maintain strict quality control at the factory but it is a good idea to check each plank for blemishes or flaws. Return any such planks to your dealer for replacement.

Helpful Notice 3: When installing WPC Flooring be sure to keep dust, dirt or foreign particles away from the Locking Strip. The cleaner the Locking Strip remains, the better the bond between planks. The WPC planks are best kept in the box until you are ready to install them.



Installing WPC Flooring:

1. Installation should begin in a corner (left side of room) and proceed from the wall with the tongue facing toward the wall (Figure 1). Allow a minimum gap of ¼" (Figure 2) for subfloor movement or product expansion.
2. Starting in the farthest left, upper corner of the room position the first plank so that both the head and side seam groove is exposed. This requires installing the product from left to right in the room (Figure 2).
3. Install the second plank in the first row by laying the short-end tongue onto the previously installed plank short-end groove. Fasten the planks together by firmly pressing down with your thumb along the seam to line up edges the planks together. Use of a soft, white rubber mallet is recommended to fasten the tongue & groove together. You will feel the planks lock together (Figure 3).
4. Cut a plank in half of the length to start the second row, stagger the end seam at least 6" from the first plank. Install the first plank in the second row by inserting the long side tongue into the groove of the plank in the first row. This is best done with a low angle (20° to 30°) of the plank (Figure 4).
5. To install the remaining planks, first align the long edge tongue into the groove of the previous row while making sure the short-edge tongue is laying on the short-edge groove of the previous plank (Figure 5).
6. Finally, Angle the long edge tongue into the plank in the row above and lock it together, firmly tap or press the short-edge tongue into the short-edge groove of the previous plank.

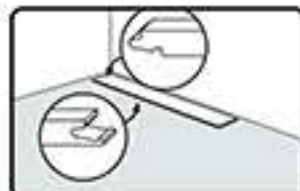


Figure 1

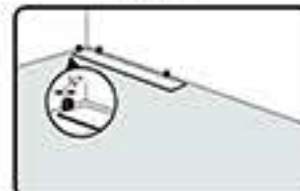


Figure 2

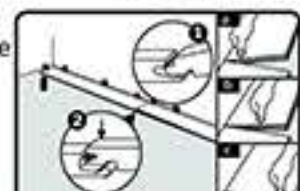


Figure 3

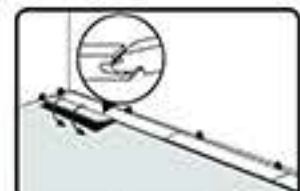


Figure 4

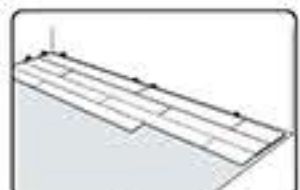


Figure 5

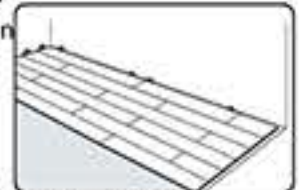


Figure 6

CARE & MAINTENANCE GUIDE

You have just installed WPC flooring. Your new resilient floor was produced under the highest quality standards and will provide you with a lifetime of enjoyment. Although WPC Flooring is one of the easiest floors to maintain, please follow the recommendations in this guide to retain the fresh look and protect the factory finish. After installing the floor, we recommend a first cleaning to remove any loose dirt or debris that may have been introduced during the installation process.

Please check any new cleaning agents on a small test patch of the floor in an inconspicuous area, and avoid using harsh cleaners or alcohol or ammonia-based cleaning products.

1. First sweep and vacuum the floor surface to ensure removal of all loose dust, dirt, and debris. Using a mop (or, for large areas, a floor cleaning machine with a low-abrasive pad), scrub the flooring surface. Using warm, clean water, rinse several times or as needed, then use a dry mop or wet-vacuum to remove the water and allow drying.
2. Do not allow pets with unclipped nails to damage your WPC Flooring. It may result in severe scratching to the surface. Replace furniture glides and round-headed hard plastic glides with floor protectors made of non-staining felt on furniture legs. The same is true for any high heeled shoes that do not have proper tips on the heels which are not covered by the warranty.
3. Avoid exposure to direct sunlight for prolonged periods of time. During peak sunlight hours, use drapes or blinds to minimize the direct sunlight on the WPC Flooring. Most types of vinyl flooring will be affected by continuous strong sunlight. To avoid an uneven appearance, please consider relocations of any area rugs from time to time. Long term continuous inside temperatures over 95 F degrees combined with strong direct sunlight could cause thermal degradation.
4. Always sweep or vacuum your WPC Flooring before cleaning so that all loose dirt and particles are removed. Some hand wiping may be required to remove tough spots and spills. For best results do not use combination cleaner/finish products.
5. **DO NOT WAX YOUR WPC Flooring!** The surface of your floor is very dense and nonporous, which prevents wax from penetrating and thus builds up a bed for yellowing and dirt collection. The same non-porous feature also provides all the protection against wear and staining that you will need.
6. If your floor has been exposed to excessive amounts of water due to flooding, do not panic. WPC Flooring is waterproof! Simply remove the water as quickly as possible. A dehumidifier should be promptly turned on in the room to reduce the moisture levels back to normal. Do not dry the room below the normal moisture level that existed previously.

AquaFix WPC Collection Warranty Program

Lifetime limited structural warranty

This warranty covers the structure of the plank should be free of manufacture defects after a proper installation is performed. Unifloor Trading Inc will apply credit to retailer, and the credit is based on the original purchaser amount shows on the original receipt.

Notes: Warranty describe above is limited to structural defects occur after completion of installation. Defects which occur prior to installation is only covered with material replacement with same amount of defect products, while installation labour is not covered. Installation contractor is responsible for inspecting and reporting for any product defects prior to installation. Any pieces that are installed is deemed to be accepted by the installer and homeowner.

Life Time Residential Wear Warranty and 10 years limited moderate Commercial wear warranty

Under this warranty program, the vinyl wear layer of AquaFix wpc products is guaranteed not to be completely wear through by exposing the core. If the defect has been confirmed, product replacement credit will arrange to original dealer.

For moderate commercial wear warranty, it is limited with no heavy duty or heavy traffic usage. Place such as warehouse, any outdoor spaces, industry factory, etc.

Conditions of Residential and moderate Commercial wear Warranty programs

1. Warranty program is limited to original purchaser only.
2. All installation procedures must be followed under the installation instructions.
3. No defect piece should be installed, visual inspection prior to installation is a required.
4. Damage such as scratch, dent, rolling, adhesives or any surface damage which is not caused by normal wear is not covered.
5. Surface sheen lost is a result of natural aging of material which is not covered under any warranty program.
6. Products are not allowed to use at any outdoor space.
7. Color variation caused by exposure to strong direct sunlight or any UV lighting is not covered.
8. Damage caused by caused by loss of temperature control is not covered. (refer to maintenance instruction for temperature control)
9. Damage caused by mold, or bacteria growth is not covered.
10. Urine, chemical agent, acid solvent, etc. which causes damage to surface of product is not covered.
11. Unifloor Trading Inc cannot guarantee to replace products with the same color and spec. Equivalent value products will be provided as options in case previous product is discontinued.

Protection, inspection, and Maintenance

A, Clean up:

- Sweep the floor with cloth towel along with recommended cleaner.
- Inspect and clean any residue left behind after removing the adhesive tapes
- Inspect and clean any excess adhesive left during the job, proper adhesive remover is required.

B, Inspection:

- Visually inspect all floor surface with project management or homeowner and touch up any minor imperfection.
- Visually inspect all expansion spaces along walls and any vertical objects

C, Protection:

- Use heavy duty floor protection membrane (e.g. Ram board heavy-duty floor protection cardboard) to cover all areas.
- Avoid taping protection membrane directly to surface of floor by overlapping each run of the membrane while taping different run together.
- Tape the end run of membrane along baseboard or shoe base with extreme low adhesive tape.
- Extra layer of plywood, MDF board might be use along hallway or high traffic areas where furniture and appliances will be transfer into the premises.
- Putting felt pads on all furniture's legs are highly recommended since all hardwood products can be scratch and dent.
- Keep in mind, the use of area rugs will create a uneven color variation due to the uneven exposure to sunlight.

D, Maintenance:

- Sweep WPC flooring at a daily base to remove any particles which might scratch flooring product.
- If a vacuum is used, make sure a soft texture nozzle is attached to avoid scratching marks being left on the surface.
- Product must be used within a temperature climate control between 0°C to 50°C

